

# Barrington Hills Police Pension Fund

---

## Monthly Financial Report

For the Month Ended

November 30, 2017

---

Prepared By



Lauterbach & Amen, LLP

CERTIFIED PUBLIC ACCOUNTANTS

# **Barrington Hills Police Pension Fund**

## **Table of Contents**

|   | Starting<br>on<br>Page |
|---|------------------------|
| Accountants' Compilation Report.....                            | 1-1                    |
| Financial Statements  |                        |
| Statement of Net Position - Modified Cash Basis.....            | 2-1                    |
| Statement of Changes in Net Position - Modified Cash Basis..... | 2-2                    |
| Other Supplementary Information                                 |                        |
| Cash & Investments - Pie Chart.....                             | 3-1                    |
| Cash Analysis Report.....                                       | 4-1                    |
| Cash Analysis Summary - Graph.....                              | 5-1                    |
| Revenue Report.....   | 6-1                    |
| Expenses - Bar Chart.....                                       | 7-1                    |
| Expense Report.....   | 8-1                    |
| Member Contribution Report.....                                 | 9-1                    |
| Payroll Batch Report.....                                       | 10-1                   |
| Quarterly Vendor Check Report.....                              | 11-1                   |



---

## Accountants' Compilation Report

---



December 18, 2017

Barrington Hills Police Pension Fund  
112 Algonquin Road  
Barrington Hills, IL 60010-5102

To Members of the Pension Board:

Management is responsible for the accompanying statement of net position - modified cash basis of the Barrington Hills Police Pension Fund as of November 30, 2017 and the related statement of changes in net position - modified cash basis for the eleven months then ended and determining that the modified cash basis of accounting is an acceptable financial reporting framework. We have performed the compilation engagement in accordance with Statements for Standards and Review Services promulgated by the Accounting and Review Services Committee of the American Institute of Certified Public Accountants. We did not audit or review the accompanying financial statements nor were we required to perform any procedures to verify the accuracy or completeness of the information provided by management. Accordingly, we do not express an opinion, a conclusion, nor provide any form of assurance on the financial statements.

The financial statements are prepared in accordance with the modified cash basis of accounting, which is a basis of accounting other than accounting principles generally accepted in the United States of America.

Management has elected to omit substantially all of the disclosures included in financial statements prepared in accordance with the modified cash basis of accounting. If the omitted disclosures were included in the financial statements and other supplementary information, they might influence the user's conclusions about the Pension Fund's assets, liabilities, net position, additions and deductions. Accordingly, these financial statements and other supplementary information are not designed for those who are not informed about such matters.

#### Other Matter

The other supplementary information is presented for purposes of additional analysis and is not a required part of the basic financial statements. This information is the representation of management. The information was subject to our compilation engagement. We have not audited or reviewed the other supplementary information nor were we required to perform any procedures to verify the accuracy or completeness of the information provided by management. Accordingly, we do not express an opinion, a conclusion, nor provide any form of assurance on the other supplementary information.

We are not independent with respect to the Barrington Hills Police Pension Fund.

Cordially,

*Lauterbach & Amen, LLP*

Lauterbach & Amen, LLP



---

## Financial Statements

---

**Barrington Hills Police Pension Fund**  
**Statement of Net Position - Modified Cash Basis**  
**As of November 30, 2017**

**Assets**

|                                  |                             |
|----------------------------------|-----------------------------|
| Cash and Cash Equivalents        | \$ 22,261.54                |
| Investments at Fair Market Value |                             |
| Money Market Mutual Funds        | 704,030.94                  |
| Illinois Funds                   | 261,660.92                  |
| Fixed Income                     | 5,035,783.80                |
| Mutual Funds                     | 4,242,080.39                |
| Total Cash and Investments       | <u>10,265,817.59</u>        |
| Accrued Interest                 | 21,130.84                   |
| Due from Municipality            | 28,942.55                   |
| Prepays                          | <u>2,529.17</u>             |
| <b>Total Assets</b>              | <b><u>10,318,420.15</u></b> |

**Liabilities**

|                          |                         |
|--------------------------|-------------------------|
| Expenses Due/Unpaid      | <u>13,693.24</u>        |
| <b>Total Liabilities</b> | <b><u>13,693.24</u></b> |

|  |                                    |
|--|------------------------------------|
| <b>Net Position Held in Trust for Pension Benefits</b> | <b><u><u>10,304,726.91</u></u></b> |
|--|------------------------------------|

# Barrington Hills Police Pension Fund

## Statement of Changes in Net Position - Modified Cash Basis

### For the Eleven Months Ended November 30, 2017

#### Additions

|                           |                   |
|---------------------------|-------------------|
| Contributions - Municipal | \$ 703,701.32     |
| Contributions - Members   | 148,174.59        |
| Total Contributions       | <u>851,875.91</u> |

|                               |                   |
|-------------------------------|-------------------|
| Investment Income             |                   |
| Interest and Dividends Earned | 143,717.39        |
| Net Change in Fair Value      | 681,877.72        |
| Total Investment Income       | <u>825,595.11</u> |
| Less Investment Expense       | (27,610.66)       |
| Net Investment Income         | <u>797,984.45</u> |

|                        |                            |
|------------------------|----------------------------|
| <b>Total Additions</b> | <b><u>1,649,860.36</u></b> |
|------------------------|----------------------------|

#### Deductions

|                              |             |
|------------------------------|-------------|
| Administration               | 43,720.83   |
| Pension Benefits and Refunds |             |
| Pension Benefits             | 441,040.40  |
| Refunds                      | <u>0.00</u> |

|                         |                          |
|-------------------------|--------------------------|
| <b>Total Deductions</b> | <b><u>484,761.23</u></b> |
|-------------------------|--------------------------|

|                           |                     |
|---------------------------|---------------------|
| <b>Change in Position</b> | <b>1,165,099.13</b> |
|---------------------------|---------------------|

#### Net Position Held in Trust for Pension Benefits

|                   |                     |
|-------------------|---------------------|
| Beginning of Year | <u>9,139,627.78</u> |
|-------------------|---------------------|

|                      |                             |
|----------------------|-----------------------------|
| <b>End of Period</b> | <b><u>10,304,726.91</u></b> |
|----------------------|-----------------------------|



---

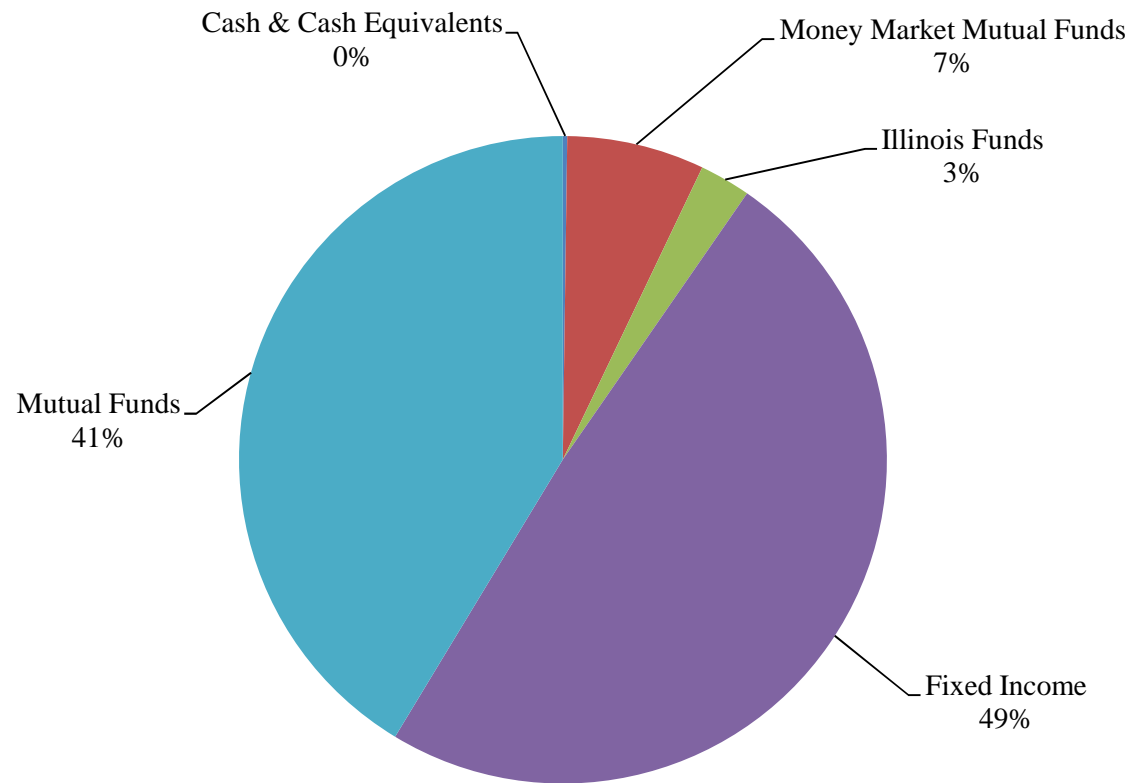
## Other Supplementary Information

---

# Barrington Hills Police Pension Fund

---

## Cash and Investments



# Barrington Hills Police Pension Fund

## Cash Analysis Report

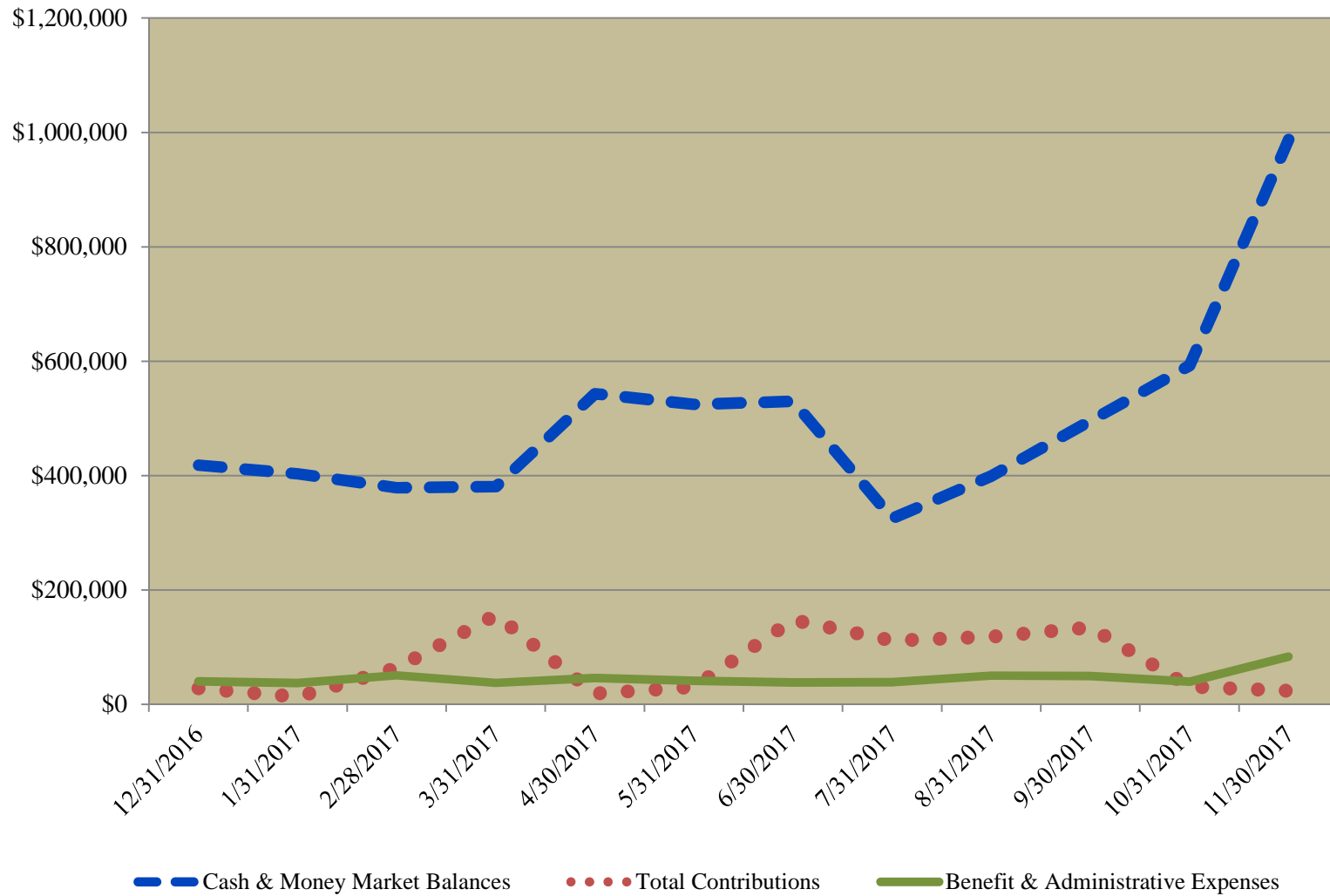
### For the Twelve Periods Ending November 30, 2017

|  |             | <u>12/31/16</u>        | <u>01/31/17</u>        | <u>02/28/17</u>       | <u>03/31/17</u>       | <u>04/30/17</u>        | <u>05/31/17</u>        | <u>06/30/17</u>       | <u>07/31/17</u>       | <u>08/31/17</u>       | <u>09/30/17</u>       | <u>10/31/17</u>       | <u>11/30/17</u>        |
|--|-------------|------------------------|------------------------|-----------------------|-----------------------|------------------------|------------------------|-----------------------|-----------------------|-----------------------|-----------------------|-----------------------|------------------------|
| <b><u>Financial Institutions</u></b>     |             |                        |                        |                       |                       |                        |                        |                       |                       |                       |                       |                       |                        |
| Harris Bank - CK                         | #321-494-7  | \$ 10,000              | 23,501                 | 30,226                | 29,403                | 21,131                 | 18,802                 | 21,763                | 28,636                | 10,324                | 16,990                | 26,564                | 22,262                 |
|  |             | <u>10,000</u>          | <u>23,501</u>          | <u>30,226</u>         | <u>29,403</u>         | <u>21,131</u>          | <u>18,802</u>          | <u>21,763</u>         | <u>28,636</u>         | <u>10,324</u>         | <u>16,990</u>         | <u>26,564</u>         | <u>22,262</u>          |
| Schwab - MM                              | #7469-8825  | 102,845                | 109,314                | 121,049               | 129,044               | 130,177                | 314,027                | 318,417               | 28,130                | 89,876                | 96,996                | 98,153                | -                      |
| Schwab - MM                              | #1225-7340  | 123,592                | 125,084                | 126,599               | 93,709                | 93,714                 | 93,723                 | 119,188               | 119,214               | 119,249               | 140,209               | 140,254               | -                      |
| MSSB - MM                                | #080084     | -                      | -                      | -                     | -                     | -                      | -                      | -                     | -                     | -                     | -                     | -                     | 597,053                |
| MSSB - MM                                | #080086     | -                      | -                      | -                     | -                     | -                      | -                      | -                     | -                     | -                     | -                     | -                     | 106,977                |
| Illinois Funds - MM                      | #1600005798 | 182,181                | 145,312                | 101,082               | 128,741               | 298,307                | 98,076                 | 70,707                | 149,391               | 180,199               | 241,682               | 327,478               | 261,661                |
|  |             | <u>408,618</u>         | <u>379,710</u>         | <u>348,730</u>        | <u>351,494</u>        | <u>522,198</u>         | <u>505,826</u>         | <u>508,312</u>        | <u>296,735</u>        | <u>389,324</u>        | <u>478,887</u>        | <u>565,885</u>        | <u>965,691</u>         |
| <b>Total</b>                             |             | <b><u>418,618</u></b>  | <b><u>403,211</u></b>  | <b><u>378,956</u></b> | <b><u>380,897</u></b> | <b><u>543,329</u></b>  | <b><u>524,628</u></b>  | <b><u>530,075</u></b> | <b><u>325,371</u></b> | <b><u>399,648</u></b> | <b><u>495,877</u></b> | <b><u>592,449</u></b> | <b><u>987,953</u></b>  |
| <b><u>Contributions</u></b>              |             |                        |                        |                       |                       |                        |                        |                       |                       |                       |                       |                       |                        |
| Current Tax - Village                    |             | 12,887                 | -                      | 50,624                | 142,688               | 5,202                  | 17,709                 | 133,988               | 98,610                | 104,363               | 121,575               | 18,046                | 10,897                 |
| Contributions - Current Year             |             | <u>13,197</u>          | <u>13,501</u>          | <u>13,451</u>         | <u>13,748</u>         | <u>13,887</u>          | <u>13,202</u>          | <u>13,750</u>         | <u>13,177</u>         | <u>14,350</u>         | <u>12,954</u>         | <u>13,202</u>         | <u>12,954</u>          |
|  |             | <u>26,084</u>          | <u>13,501</u>          | <u>64,075</u>         | <u>156,436</u>        | <u>19,089</u>          | <u>30,911</u>          | <u>147,738</u>        | <u>111,787</u>        | <u>118,713</u>        | <u>134,529</u>        | <u>31,248</u>         | <u>23,851</u>          |
| <b><u>Expenses</u></b>                   |             |                        |                        |                       |                       |                        |                        |                       |                       |                       |                       |                       |                        |
| Pension Benefits                         |             | 35,566                 | 36,531                 | 36,531                | 36,531                | 36,531                 | 36,531                 | 36,531                | 36,531                | 36,531                | 36,531                | 36,531                | 75,731                 |
| Administration                           |             | <u>4,529</u>           | <u>425</u>             | <u>14,488</u>         | <u>1,070</u>          | <u>9,481</u>           | <u>4,400</u>           | <u>1,690</u>          | <u>2,130</u>          | <u>14,025</u>         | <u>12,799</u>         | <u>3,115</u>          | <u>7,709</u>           |
|  |             | <u>40,095</u>          | <u>36,956</u>          | <u>51,019</u>         | <u>37,601</u>         | <u>46,012</u>          | <u>40,931</u>          | <u>38,221</u>         | <u>38,661</u>         | <u>50,556</u>         | <u>49,330</u>         | <u>39,646</u>         | <u>83,440</u>          |
| <b>Total Contributions less Expenses</b> |             | <b><u>(14,011)</u></b> | <b><u>(23,455)</u></b> | <b><u>13,056</u></b>  | <b><u>118,835</u></b> | <b><u>(26,923)</u></b> | <b><u>(10,020)</u></b> | <b><u>109,517</u></b> | <b><u>73,126</u></b>  | <b><u>68,157</u></b>  | <b><u>85,199</u></b>  | <b><u>(8,398)</u></b> | <b><u>(59,589)</u></b> |

See Accountants' Compilation Report

# Barrington Hills Police Pension Fund

## Cash Analysis Summary



# Barrington Hills Police Pension Fund

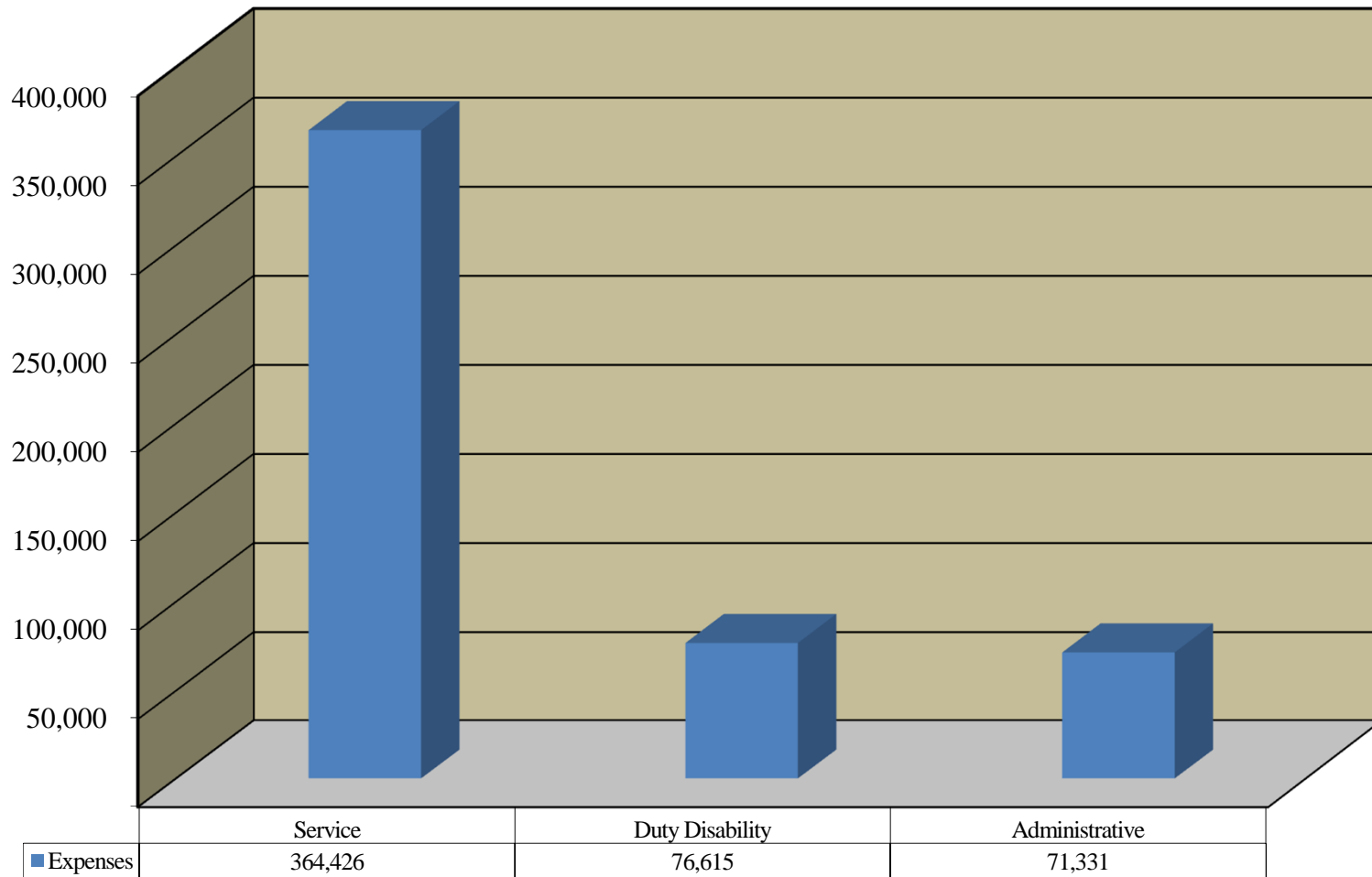
## Revenue Report as of November 30, 2017

|   |             | <u>Received<br/>this Month</u> | <u>Received<br/>this Year</u> |
|---|-------------|--------------------------------|-------------------------------|
| <b><u>Contributions</u></b>               |             |                                |                               |
| Contributions - Municipal                 |             |                                |                               |
| 41-210-00 - Current Tax - Village         |             | \$ 10,897.03                   | 703,701.32                    |
|   |             | <u>10,897.03</u>               | <u>703,701.32</u>             |
| Contributions - Members                   |             |                                |                               |
| 41-410-00 - Contributions - Current Year  |             | <u>12,953.96</u>               | <u>148,174.59</u>             |
|   |             | 12,953.96                      | 148,174.59                    |
| <b>Total Contributions</b>                |             | <b><u>23,850.99</u></b>        | <b><u>851,875.91</u></b>      |
| <b><u>Investment Income</u></b>           |             |                                |                               |
| Interest and Dividends                    |             |                                |                               |
| 43-106-01 - Illinois Funds - Money Market | #1600005798 | 267.48                         | 1,387.40                      |
| 43-252-01 - Schwab - Fixed Income         | #7469-8825  | 4,811.32                       | 73,986.91                     |
| 43-252-05 - MSSB - Fixed Income           | #080086     | 4,063.47                       | 4,063.47                      |
| 43-550-03 - Schwab - Mutual Funds         | #1225-7340  | 51.01                          | 66,283.93                     |
| 43-550-04 - MSSB - Mutual Funds           | #080084     | 1.30                           | 1.30                          |
|   |             | <u>9,194.58</u>                | <u>145,723.01</u>             |
| Gains and Losses                          |             |                                |                               |
| 44-252-01 - Schwab - Fixed Income         | #7469-8825  | (16,294.84)                    | 17,235.23                     |
| 44-252-05 - MSSB - Fixed Income           | #080086     | (6,658.46)                     | (6,658.46)                    |
| 44-550-03 - Schwab - Mutual Funds         | #1225-7340  | 4,617.79                       | 588,186.46                    |
| 44-550-04 - MSSB - Mutual Funds           | #080084     | 83,114.49                      | 83,114.49                     |
|   |             | <u>64,778.98</u>               | <u>681,877.72</u>             |
| Other Income                              |             |                                |                               |
| 45-200-00 - Accrued Interest              |             | (2,131.19)                     | (2,005.62)                    |
|   |             | <u>(2,131.19)</u>              | <u>(2,005.62)</u>             |
| <b>Total Investment Income</b>            |             | <b><u>71,842.37</u></b>        | <b><u>825,595.11</u></b>      |
| <b>Total Revenue</b>                      |             | <b><u>95,693.36</u></b>        | <b><u>1,677,471.02</u></b>    |

# Barrington Hills Police Pension Fund

---

## Pension Benefits and Expenses



# Barrington Hills Police Pension Fund

## Expense Report as of November 30, 2017

|   | <b><u>Expended<br/>this Month</u></b> | <b><u>Expended<br/>this Year</u></b> |
|---|---------------------------------------|--------------------------------------|
| <b><u>Pensions and Benefits</u></b>           |                                       |                                      |
| 51-020-00 - Service Pensions                  | \$ 33,129.62                          | 364,425.82                           |
| 51-040-00 - Duty Disability Pensions          | 42,601.18                             | 76,614.58                            |
| <b>Total Pensions and Benefits</b>            | <b><u>75,730.80</u></b>               | <b><u>441,040.40</u></b>             |
| <b><u>Administrative</u></b>                  |                                       |                                      |
| Professional Services                         |                                       |                                      |
| 52-170-01 - Actuarial Services                | 0.00                                  | 3,500.00                             |
| 52-170-03 - Accounting & Bookkeeping Services | 440.00                                | 6,710.00                             |
| 52-170-04 - Medical Services                  | 0.00                                  | 8,751.60                             |
| 52-170-05 - Legal Services                    | 0.00                                  | 18,904.65                            |
|   | <u>440.00</u>                         | <u>37,866.25</u>                     |
| Investment                                    |                                       |                                      |
| 52-190-01 - Investment Manager/Advisor Fees   | 7,169.40                              | 27,510.66                            |
| 52-190-04 - Safe Deposit and Bank Fees        | 100.00                                | 100.00                               |
|   | <u>7,269.40</u>                       | <u>27,610.66</u>                     |
| Other Expense                                 |                                       |                                      |
| 52-290-25 - Conference/Seminar Fees           | 0.00                                  | 2,325.00                             |
| 52-290-26 - Association Dues                  | 0.00                                  | 1,840.00                             |
| 52-290-34 - IDOI Filing Fee Expense           | 0.00                                  | 1,689.58                             |
|   | <u>0.00</u>                           | <u>5,854.58</u>                      |
| <b>Total Administrative</b>                   | <b><u>7,709.40</u></b>                | <b><u>71,331.49</u></b>              |
| <b>Total Expenses</b>                         | <b><u>83,440.20</u></b>               | <b><u>512,371.89</u></b>             |

**Barrington Hills Police Pension Fund**  
**Member Contribution Report**  
**As of Month Ended November 30, 2017**

| <b>Name</b>              | <b>Thru<br/>Prior Fiscal<br/>Year</b> | <b>Current<br/>Fiscal<br/>Year</b> | <b>Service<br/>Purchase</b> | <b>Refunds</b> | <b>Total<br/>Contributions</b> |
|--------------------------|---------------------------------------|------------------------------------|-----------------------------|----------------|--------------------------------|
| Baird, Brian D.          | \$ 104,773.91                         | 8,646.26                           | 0.00                        | 0.00           | 113,420.17                     |
| Borck, Todd M.           | 122,043.62                            | 10,120.30                          | 0.00                        | 0.00           | 132,163.92                     |
| Caputo, Dominic V.       | 137,688.34                            | 6,366.58                           | 0.00                        | 0.00           | 144,054.92                     |
| Colditz, Joseph S.       | 137,628.23                            | 10,882.32                          | 0.00                        | 0.00           | 148,510.55                     |
| Currie, Jason D.         | 55,804.39                             | 8,571.94                           | 0.00                        | 0.00           | 64,376.33                      |
| Deutschle, Gary A.       | 84,425.90                             | 8,522.39                           | 0.00                        | 0.00           | 92,948.29                      |
| Hensler, Jeremy J.       | 89,439.74                             | 8,621.49                           | 0.00                        | 0.00           | 98,061.23                      |
| Johnson, Mark E.         | 73,986.36                             | 8,621.49                           | 0.00                        | 0.00           | 82,607.85                      |
| Kann, David M.           | 122,613.55                            | 10,120.30                          | 0.00                        | 0.00           | 132,733.85                     |
| McKinney, Patrick J.     | 89,676.87                             | 8,621.49                           | 0.00                        | 0.00           | 98,298.36                      |
| Parada, Sabas N.         | 81,452.63                             | 8,621.49                           | 0.00                        | 0.00           | 90,074.12                      |
| Riedel, Ronald W.        | 129,788.78                            | 10,145.07                          | 0.00                        | 0.00           | 139,933.85                     |
| Ruffin, Ronald L.        | 87,662.73                             | 8,621.49                           | 0.00                        | 0.00           | 96,284.22                      |
| Semelsberger, Richard W. | 161,398.08                            | 11,902.42                          | 0.00                        | 0.00           | 173,300.50                     |
| Stokes, Erik E.          | 117,557.61                            | 2,469.67                           | 0.00                        | 0.00           | 120,027.28                     |
| Thomas, Austin A.        | 0.00                                  | 2,783.09                           | 0.00                        | 0.00           | 2,783.09                       |
| Underwood, Curt A.       | 138,915.67                            | 10,430.82                          | 0.00                        | 0.00           | 149,346.49                     |
| Walega, Dennis C.        | 0.00                                  | 4,105.98                           | 0.00                        | 0.00           | 4,105.98                       |
| <b>Totals</b>            | <b>1,734,856.41</b>                   | <b>148,174.59</b>                  | <b>0.00</b>                 | <b>0.00</b>    | <b>1,883,031.00</b>            |

Batches 27626,27685

Barrington Hills Police Pension Fund

## Multiple Batch Report

Check Date 11/30/2017

| SSN                    | Family ID | Employee Name             | ACH                                 | Retro                               | Net Amount  | Member Gross | Federal Tax |
|------------------------|-----------|---------------------------|-------------------------------------|-------------------------------------|-------------|--------------|-------------|
|                        |           | Alt Payee Name            |                                     | Check #                             |             |              |             |
| <u>Duty Disability</u> |           |                           |                                     |                                     |             |              |             |
| ***-**-1358            |           |                           |                                     |                                     |             |              |             |
|                        | 100511    | Fernandez, Alexander      | <input checked="" type="checkbox"/> | <input type="checkbox"/>            | \$3,401.34  | \$3,401.34   | \$0.00      |
|                        |           |                           |                                     | 0                                   |             |              |             |
|                        |           | ***-**-1358 Subtotal:     |                                     |                                     | \$3,401.34  | \$3,401.34   | \$0.00      |
| ***-**-5623            |           |                           |                                     |                                     |             |              |             |
|                        | 112578    | Stokes, Erik E.           | <input checked="" type="checkbox"/> | <input checked="" type="checkbox"/> | \$34,174.22 | \$34,174.22  | \$0.00      |
|                        |           |                           |                                     | 0                                   |             |              |             |
|                        | 112578    | Stokes, Erik E.           | <input checked="" type="checkbox"/> | <input type="checkbox"/>            | \$5,025.62  | \$5,025.62   | \$0.00      |
|                        |           |                           |                                     | 0                                   |             |              |             |
|                        |           | ***-**-5623 Subtotal:     |                                     |                                     | \$39,199.84 | \$39,199.84  | \$0.00      |
|                        |           | Duty Disability Subtotal: |                                     |                                     | \$42,601.18 | \$42,601.18  | \$0.00      |
| <u>Service</u>         |           |                           |                                     |                                     |             |              |             |
| ***-**-1074            |           |                           |                                     |                                     |             |              |             |
|                        | 100513    | Gallagher, Michael B.     | <input checked="" type="checkbox"/> | <input type="checkbox"/>            | \$4,938.27  | \$5,944.04   | \$1,005.77  |
|                        |           |                           |                                     | 0                                   |             |              |             |
|                        |           | ***-**-1074 Subtotal:     |                                     |                                     | \$4,938.27  | \$5,944.04   | \$1,005.77  |
| ***-**-2873            |           |                           |                                     |                                     |             |              |             |
|                        | 103734    | Hammelmann, Gary A.       | <input checked="" type="checkbox"/> | <input type="checkbox"/>            | \$5,396.57  | \$6,130.28   | \$733.71    |
|                        |           |                           |                                     | 0                                   |             |              |             |
|                        |           | ***-**-2873 Subtotal:     |                                     |                                     | \$5,396.57  | \$6,130.28   | \$733.71    |

See Accountants' Compilation Report

Batches 27626,27685

Barrington Hills Police Pension Fund

## Multiple Batch Report

Check Date 11/30/2017

| SSN         | Family ID | Employee Name      | ACH                                 | Retro                    | Net Amount  | Member Gross | Federal Tax |
|-------------|-----------|--------------------|-------------------------------------|--------------------------|-------------|--------------|-------------|
|             |           | Alt Payee Name     |                                     | Check #                  |             |              |             |
| <hr/>       |           |                    |                                     |                          |             |              |             |
| ***-**-1667 |           |                    |                                     |                          |             |              |             |
|             | 103733    | Murphy, Michael N. | <input checked="" type="checkbox"/> | <input type="checkbox"/> | \$6,871.00  | \$8,656.22   | \$1,785.22  |
|             |           |                    |                                     | 0                        |             |              |             |
|             |           |                    | ***-**-1667 Subtotal:               |                          | \$6,871.00  | \$8,656.22   | \$1,785.22  |
| ***-**-6816 |           |                    |                                     |                          |             |              |             |
|             | 100512    | Prinner, Terry L.  | <input checked="" type="checkbox"/> | <input type="checkbox"/> | \$4,541.24  | \$5,517.62   | \$976.38    |
|             |           |                    |                                     | 0                        |             |              |             |
|             |           |                    | ***-**-6816 Subtotal:               |                          | \$4,541.24  | \$5,517.62   | \$976.38    |
| ***-**-0193 |           |                    |                                     |                          |             |              |             |
|             | 100510    | Schuld, Alfred W.  | <input checked="" type="checkbox"/> | <input type="checkbox"/> | \$5,935.07  | \$6,881.46   | \$946.39    |
|             |           |                    |                                     | 0                        |             |              |             |
|             |           |                    | ***-**-0193 Subtotal:               |                          | \$5,935.07  | \$6,881.46   | \$946.39    |
|             |           |                    | Service Subtotal:                   |                          | \$27,682.15 | \$33,129.62  | \$5,447.47  |

See Accountants' Compilation Report

Batches 27626,27685

Barrington Hills Police Pension Fund

Multiple Batch Report

Check Date 11/30/2017

| SSN | Family ID | Employee Name  | ACH | Retro   | Net Amount | Member Gross | Federal Tax |
|-----|-----------|----------------|-----|---------|------------|--------------|-------------|
|     |           | Alt Payee Name |     | Check # |            |              |             |

Totals

| ACH Flag    | Payments | Net Payment Total | Gross       | Federal Tax |
|-------------|----------|-------------------|-------------|-------------|
| Yes         | 8        | \$70,283.33       | \$75,730.80 | \$5,447.47  |
| No          | 0        | \$0.00            | \$0.00      | \$0.00      |
| Grand Total | 8        | \$70,283.33       | \$75,730.80 | \$5,447.47  |

# Barrington Hills Police Pension Fund

## Quarterly Vendor Check Report

All Bank Accounts  
September 1, 2017 - November 30, 2017

| <b>Date</b> | <b>Check Number</b> | <b>Vendor Name</b>                           | <b>Invoice Amount</b> | <b>Check Amount</b> |
|-------------|---------------------|--|-----------------------|---------------------|
| 09/25/17    | 30121               | <b>Robbins Schwartz Nicholas Lifton</b>      |                       |                     |
|             |                     | 52-170-05 #272483 Board Governance           | 51.25                 |                     |
|             |                     | 52-170-05 #272483 Investment Advisor         | 565.00                |                     |
|             |                     | 52-170-05 #272483 Stokes Disability          | 1,125.00              |                     |
|             |                     | 52-170-05 #272856 Board Governance           | 1,618.64              |                     |
|             |                     | 52-170-05 #272856 Investment Advisor         | 135.00                |                     |
|             |                     | 52-170-05 #272856 Stokes Disability          | 630.00                |                     |
|             |                     | 52-170-05 #273496 Board Governance           | 405.00                |                     |
|             |                     | 52-170-05 #273496 Stokes Disability          | 1,345.71              |                     |
|             |                     | 52-170-05 #274200 Board Governance           | 268.00                |                     |
|             |                     | 52-170-05 #274200 Stokes Disability          | 1,088.54              |                     |
|             |                     | 52-170-05 #274788 Board Governance           | 1,574.18              |                     |
|             |                     | 52-170-05 #274788 Fernandez Disability       | 135.00                |                     |
|             |                     | 52-170-05 #274788 Investment Advisor         | 180.00                |                     |
|             |                     | 52-170-05 #274788 Stokes Disability          | 728.26                |                     |
|             |                     | 52-170-05 #275447 Board Governance           | 832.40                |                     |
|             |                     | 52-170-05 #275447 Fernandez Disability       | 1,226.60              |                     |
|             |                     | 52-170-05 #275447 Stokes Disability          | 450.00                |                     |
|             |                     | <b>ACH Amount (Direct Deposit)</b>           |                       | <u>12,358.58</u>    |
| 09/28/17    | 30122               | <b>Lauterbach &amp; Amen, LLP</b>            |                       |                     |
|             |                     | 52-170-03 #23736 08/17 Accounting & Benefits | 440.00                |                     |
|             |                     | <b>ACH Amount (Direct Deposit)</b>           |                       | <u>440.00</u>       |
| 09/29/17    | 30120               | <b>Internal Revenue Service</b>              |                       |                     |
|             |                     | 20-230-00 Internal Revenue Service           | 5,447.47              |                     |
|             |                     | <b>ACH Amount (Direct Deposit)</b>           |                       | <u>5,447.47</u>     |
| 10/25/17    | 30125               | <b>INSPE Associates, Ltd</b>                 |                       |                     |
|             |                     | 52-170-04 IME #54166 Caputo, D.              | 2,070.00              |                     |
|             |                     | <b>Check Amount</b>                          |                       | <u>2,070.00</u>     |
| 10/25/17    | 30126               | <b>NCPERS</b>                                |                       |                     |
|             |                     | 52-290-26 #7990 Membership Renewal 2018      | 250.00                |                     |
|             |                     | <b>Check Amount</b>                          |                       | <u>250.00</u>       |
| 10/26/17    | 30124               | <b>IPPFA</b>                                 |                       |                     |
|             |                     | 52-290-26 2018 Association Dues              | 795.00                |                     |
|             |                     | <b>ACH Amount (Direct Deposit)</b>           |                       | <u>795.00</u>       |
| 10/31/17    | 30123               | <b>Internal Revenue Service</b>              |                       |                     |
|             |                     | 20-230-00 Internal Revenue Service           | 5,447.47              |                     |
|             |                     | <b>ACH Amount (Direct Deposit)</b>           |                       | <u>5,447.47</u>     |

# Barrington Hills Police Pension Fund

## Quarterly Vendor Check Report

All Bank Accounts  
September 1, 2017 - November 30, 2017

| <b>Check</b> |               | <b>Invoice</b>                               |               | <b>Check</b>            |
|--------------|---------------|--|---------------|-------------------------|
| <b>Date</b>  | <b>Number</b> | <b>Vendor Name</b>                           | <b>Amount</b> | <b>Amount</b>           |
| 11/13/17     | 30127         | <b>Lauterbach &amp; Amen, LLP</b>            |               |                         |
|              |               | 52-170-03 #24243 09/17 Accounting & Benefits | 440.00        |                         |
|              |               | <b>ACH Amount (Direct Deposit)</b>           |               | <u>440.00</u>           |
| 11/14/17     | 50000         | <b>Charles Schwab &amp; Co, Inc</b>          |               |                         |
|              |               | 52-190-04 Bank Fee                           | 50.00         |                         |
|              |               | <b>Check Amount</b>                          |               | <u>50.00</u>            |
| 11/14/17     | 50001         | <b>Charles Schwab &amp; Co, Inc</b>          |               |                         |
|              |               | 52-190-04 Bank Fee                           | 50.00         |                         |
|              |               | <b>Check Amount</b>                          |               | <u>50.00</u>            |
| 11/30/17     | 30128         | <b>Internal Revenue Service</b>              |               |                         |
|              |               | 20-230-00 Internal Revenue Service           | 5,447.47      |                         |
|              |               | <b>ACH Amount (Direct Deposit)</b>           |               | <u>5,447.47</u>         |
| 11/30/17     | 30129         | <b>Wall &amp; Associates</b>                 |               |                         |
|              |               | 52-190-01 3Q17 Management/Advisor Fee        | 7,169.40      |                         |
|              |               | <b>ACH Amount (Direct Deposit)</b>           |               | <u>7,169.40</u>         |
|              |               | <b>Total Payments</b>                        |               | <u><u>39,965.39</u></u> |