



Robert Kosin <rkosin@barringtonhills-il.gov>

Fwd: Bike Path Funding

1 message

Village Email <pmeroni@barringtonhills-il.gov>

Fri, Feb 21, 2014 at 12:23 PM

To: Robert Kosin <rkosin@barringtonhills-il.gov>, Dan Strahan <dstrahan@gha-engineers.com>

This just arrived with information we have not been aware of, at least to the best of my knowledge. I think we should ask KDOT to provide this, with maps, etc. before our March 12 meeting.

Thanks,

Patty

Sent from my iPad

Begin forwarded message:

From: "Kathy Moseler" <>
Date: February 21, 2014 at 11:11:26 AM CST
To: "Patty Meroni" <pmeroni@barringtonhills-il.gov>
Subject: RE: Bike Path Funding

Hi Patty,

I just attended an informational meeting hosted by Kane County on Longmeadow Parkway. There is fantastic news on bike trails. Perhaps you were aware of this already, but there will be a bike trail all along Longmeadow Parkway that connects to the Fox River trails and other trails in the area.

To help offset the reduction in our property values, I feel it is very important to have the Longmeadow bike trail extended along Rte 62 on the Southwest side so that Autumn Trail, Regan and Royal Way will all have direct bike and pedestrian access to the trail. It will make our small community a great place to live, attracting new residents and raising our property values.

I also learned that Kane County and others have approached the state about widening Rte 62 but so far no decision and/or funding has been made available to start Phase 1 engineering. It sounds like it may not happen during the Longmeadow Parkway construction. The timeline is very unknown.

That being said, in my opinion, it is now more important to link the Rte 62 bike trail at least to the portion that is being widened to accomodate Longmeadow Parkway. Waiting for Rte 62 to be widened would delay the project indefinitely.

I would like to offer any assistance to help make the bike trail extension happen. The funding sources I sent last week were the ones I found only after a very quick search. If you would like some additional links to funding possibilities, I would like to volunteer to work on it in my spare time (free of charge). Let me know...

Sincerely,

From: Patty Meroni [mailto:pmeroni@barringtonhills-il.gov]
Sent: Tuesday, February 18, 2014 5:29 PM
To: Kathy Moseler
Subject: Re: Bike Path Funding

Hi Kathy,

You are interested in lots of things! Thanks for the info. I will forward it to Bob Kosin, our village administrator, and Dan Strahan, in the event they have not seen these sites. The village last year received a grant from CMAP (Chicago Metropolitan Area Planning) to fund a study for bike trails to link up the trails east of the village with those to the west. This is being worked on now, and the Planning Commission, with Bob's oversight, as well as the coordination of Roads and Bridges (that's me), as we have several routes that are being studied and planned.💎

The funding application processed works under Bob Kosin, with Dan's input, so I'll see what they have to say and let you know. You can always contact Bob Kosin at the village if you want specific details.

Thanks again, and I'll keep you posted.

Patty

On Tue, Feb 18, 2014 at 4:59 PM, Kathy Moseler <> wrote:

Patty,

I was curious about how a bike path could be funded, so I did some Google searches and found that there is a lot of money available.💎

Here are two examples:

http://www.fhwa.dot.gov/environment/recreational_trails/overview/

<http://usmayors.org/childhoodobesity/>

I think a politician could come out looking very good by making this bike path happen.💎 Could I get your advice on which politician I can approach who might want to take the lead on this?

Thanks!

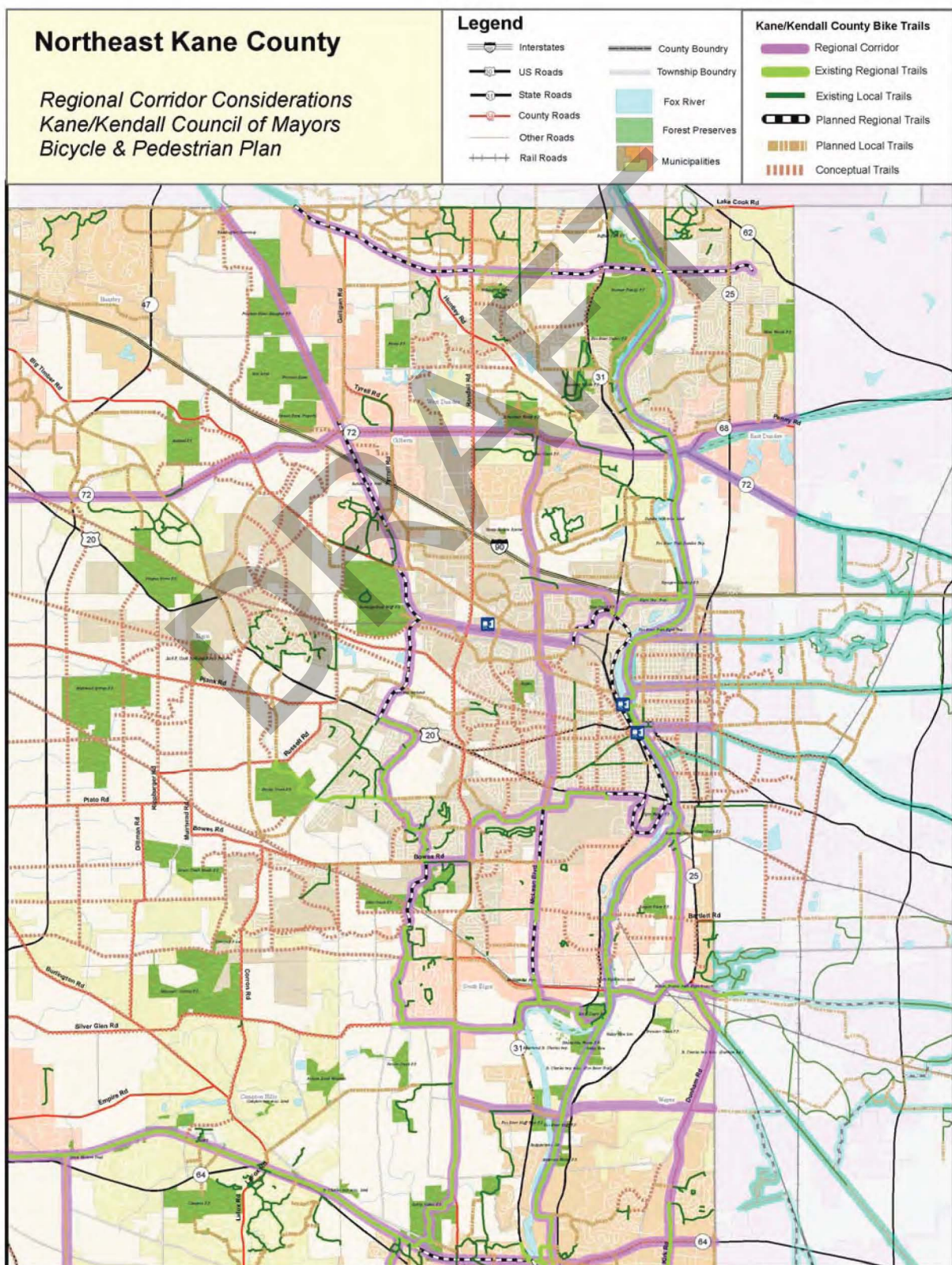
Kathy Moseler

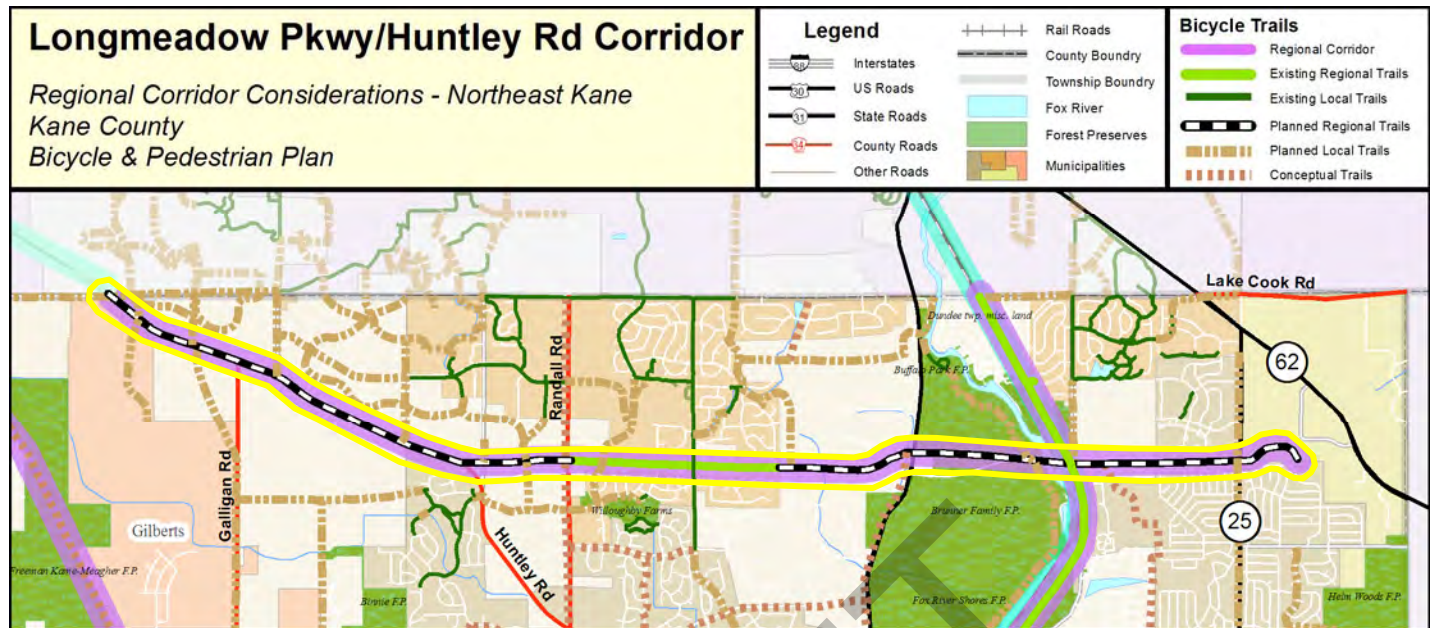
To ensure compliance with the Open Meetings Act, elected or appointed members of the public body may reply to this message, but they should not forward it or send a copy of the reply to other members of the public body.

To ensure compliance with the Open Meetings Act, elected or appointed members of the public body may reply to this message, but they should not forward it or send a copy of the reply to other members of the public body.

NORTHEAST KANE COUNTY

The “Northeast Kane County” area is an urbanized portion of Kane County including primarily Dundee and Elgin Townships, and portions of Rutland, Plato, St. Charles and Campton Townships. For this study, the boundaries are: DuPage and Cook Counties to the east, McHenry County to the north, Dittman Road (extended) to the west and the Great Western Trail to the South.





This is a significant east-west corridor in the northern portion of Kane County. It connects to an existing path on Longmeadow Parkway and the Fox River Trail and would travel north into McHenry County. An off-street path is proposed to be constructed as part of the Longmeadow Parkway Bridge Corridor between Huntley Road and Algonquin Road. Coordination with McHenry County to continue the path to the northwest is recommended.

Longmeadow Parkway/ Huntley Road Corridor

7.71 miles

Jurisdictions

Algonquin, Carpentersville, Barrington Hills, Gilberts, Dundee Township
Park District, Kane County, Kane County Forest Preserve District, IDOT

Connectivity to Regional Destinations

Brunner Family Forest Preserve

Connectivity to Existing Bicycle Network

Fox River Trail, Sleepy Hollow Road Path

Direct access to/from Transit

Pace 803

Barriers

Lacking a bridge across the Fox River, Need for crossings at Randall Road, IL Rte 31 & IL Rte 25

Percentage of Corridor Existing

16%

Percentage of Corridor Planned

84%

VILLAGE OF BARRINGTON

APPENDIX B:

PROPOSED

FACILITIES

MAP

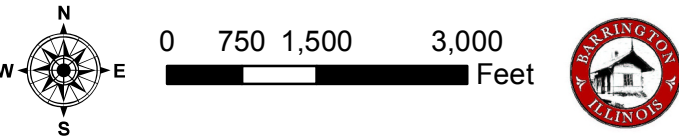
Legend

- Proposed Bike Routes
- Proposed Bike Lanes
- Proposed Shared-Use Path
- Proposed Bike Trails
- Proposed Sidewalk Connector
- Proposed NWMC Corridor
- Schools
- Village Hall
- Barrington Library
- Metra Rail Station
- Boundary

*The Northwest Municipal Conference (NWMC) Northwest Highway Corridor plan can be found on their website at www.nwmc-cog.org

- Facility Definitions
1. Bicycle Lane: Pavement markings and signage designate at least four feet of on-street space solely for bicycle usage.
 2. Bicycle Route: When there is not enough room for a bicycle lane, signage designates safe and continuous routes.
 3. Shared-Use Path: Paved off-street facility for non-motorized vehicles, such as bicycles, and pedestrians.
 4. Bike Trail: Non-paved off-street facility, which is widely used by bicyclists and pedestrians.

Disclosure: Bikeways located outside of the Village of Barrington are maintained by others.



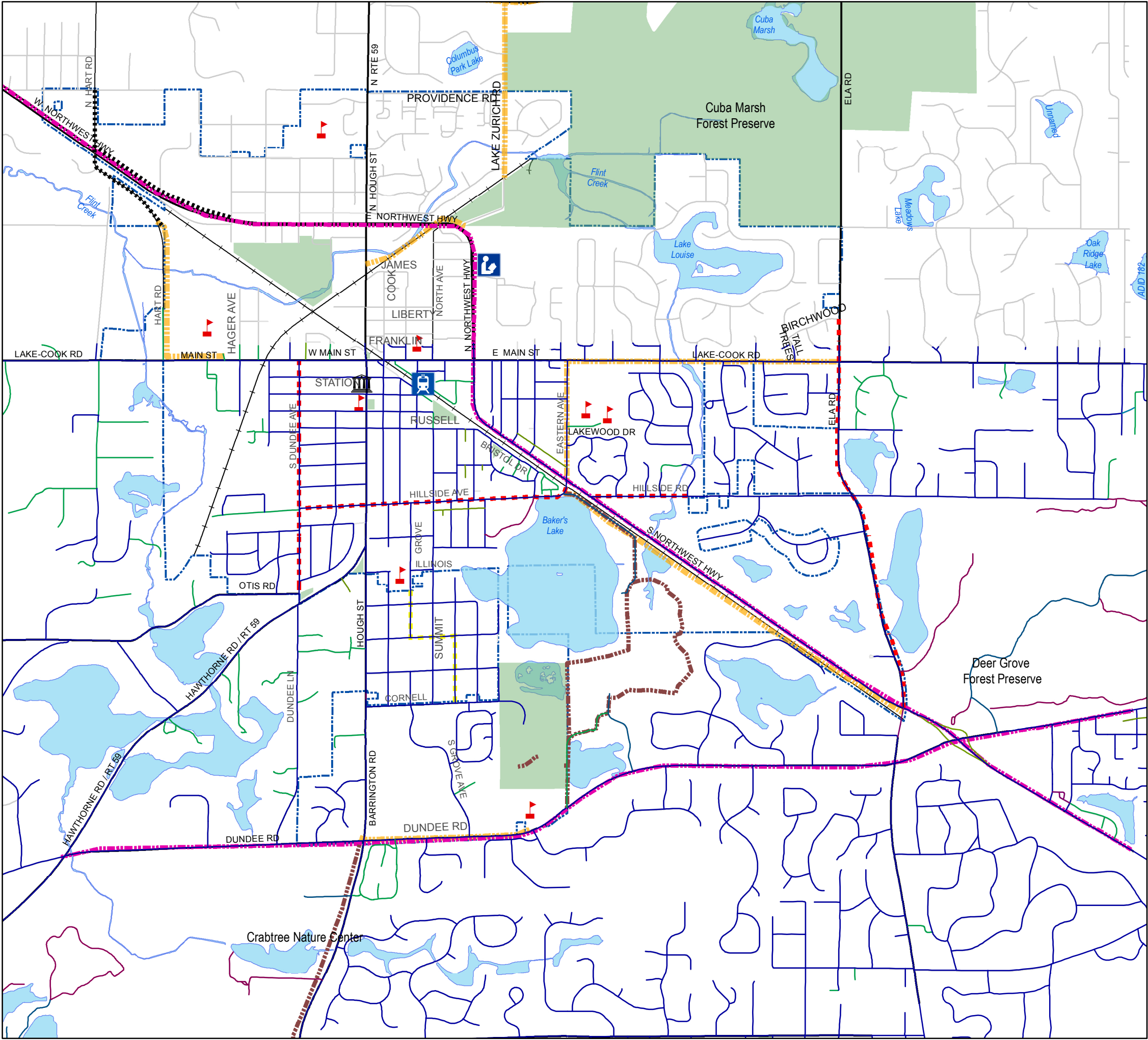
Projection: NAD 1983 StatePlane Illinois East FIPS 1201 Feet

Source: Barrington GIS, BAGIS, Cook County and Lake County

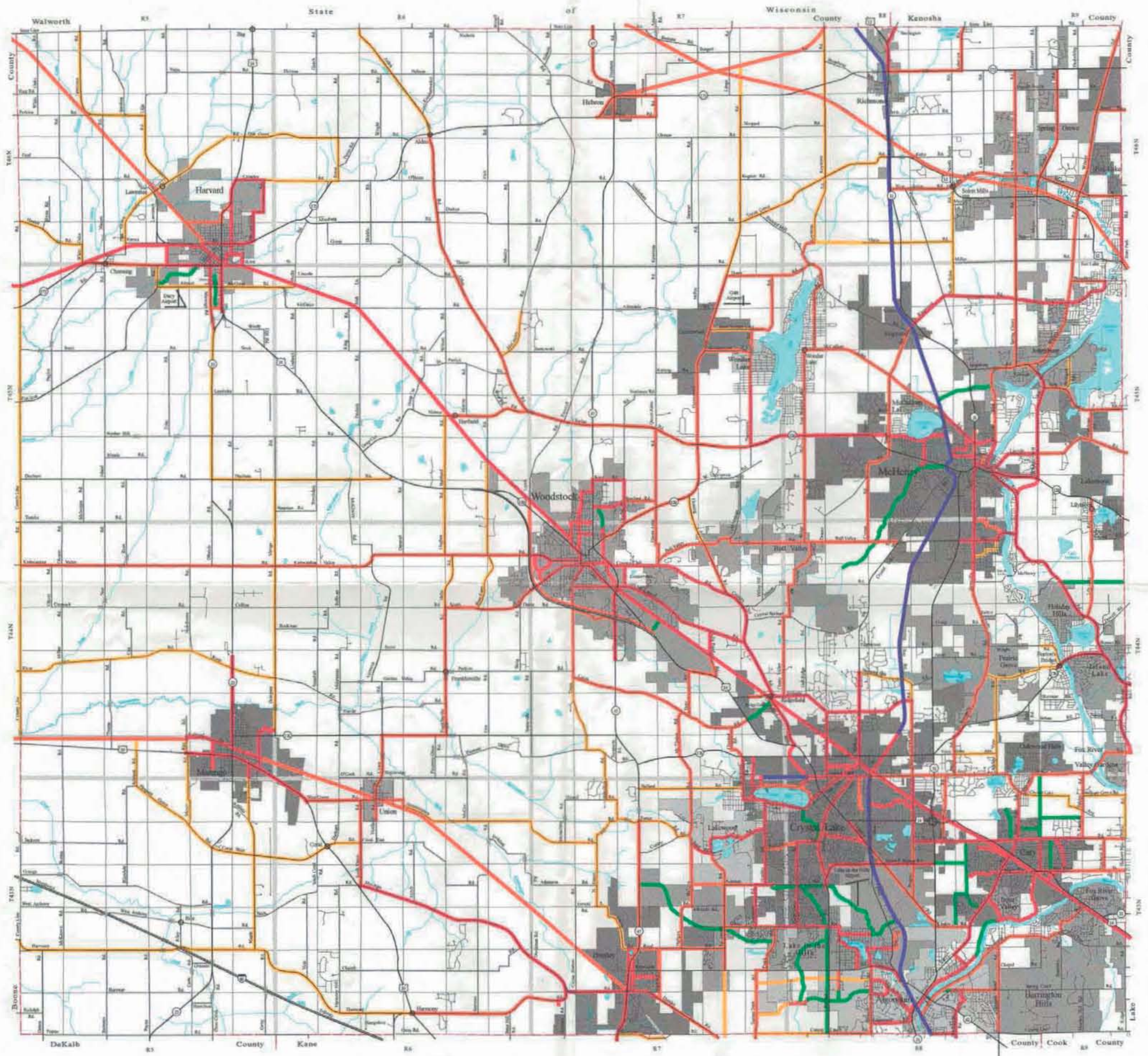
Date: 8/21/2012

Prepared by: Village of Barrington Geographic Information Systems

Disclaimer of Liability: GIS maps and related data contained therein ("maps and data") made available by the Village of Barrington are intended for reference purposes only. The Village provides such maps and data AS IS without any implied or expressed warranties as to its accuracy and completeness. Such maps and data are believe to be accurate but accuracy is not in any way guaranteed and modifications are made to such maps and data on an ongoing basis as new information becomes available. Any use and/or application of such maps and data is done solely at the user's own risk.



McHENRY COUNTY SUBREGIONAL BICYCLE PLAN



Suggested Bicycle Facility Network

Legend

- | | | |
|---|---|--|
| — Existing or Committed Off Road Trails | — Intermediate Priority Facility Need | — Existing or Potential Greenway Corridor |
| — Highest Priority Facility Need | — Lowest Priority Facility Need | |

Note:
Bicycle facility needs depicted are for illustrative purposes only.
Bicycle facilities used for recreation only have not been identified.
Individual projects have not been endorsed by the McHenry County Council of Mayors.



Published by:
Office of the County Engineer
McHenry County Highway Department
P.O. Box 368
Woodstock, Illinois 60098

October 1996 DJH